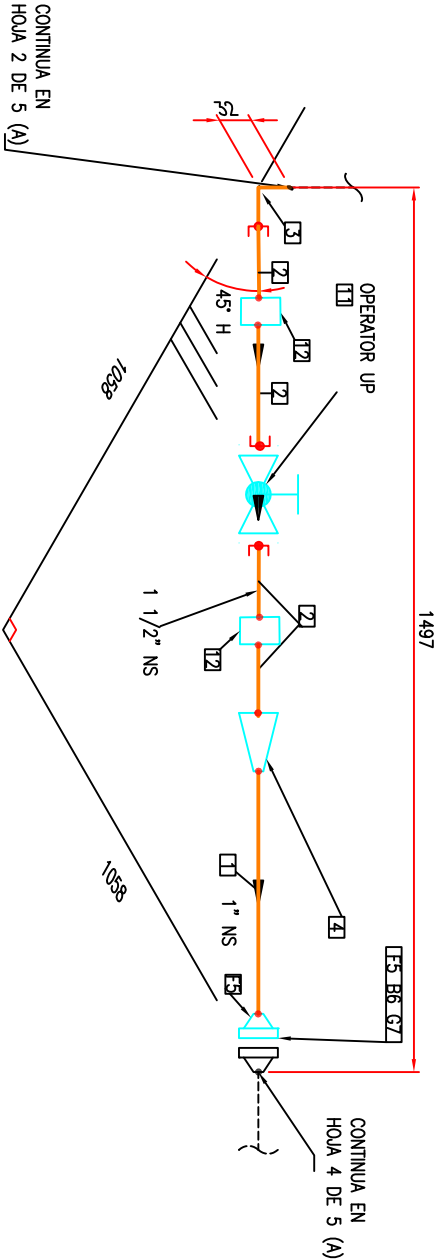


BILL OF MATERIALS			
ID	QTY	ND	DESCRIPTION
1	0.4M	1"	PIPE SEAMLESS, MATERIAL: API 5L GR B, SCH 160, BEVELLED END, ASME B36.10.
2	0.4M	1 1/2"	PIPE SEAMLESS, MATERIAL: API 5L GR B, SCH 160, PLAIN END, ASME B36.10.
3	1	1 1/2"	ELL 90, 6000 LB, SW, ASME B16.11, ASTM A105
4	1	1 1/2"x1"	REDUCER CONC. 6000 LB, SW, ASME B16.11, ASTM A105
5	2	1"	FLANGE SW, 1500 LB, RTJ, ASME B16.5, ASTM A105
6	4	5/8"x88	STD BOLT 2HY HX NUT A193 GR.B7/A194 ZINC, RF, 1500 LB, ASME B18.2.1 & ASME B18.2.2
7	1	1"	OVAR RING GASKET, CS, 1500 LB, R16, ASME B16.20
11	1	1 1/2"	BALL VALVE, 2500 LB, SW + NIPPLE, TRIM 8, ASTM A105, HAND WHEEL
12	2	1 1/2"	COUPLING, 9000 LB, SW, ASME B16.11, ASTM A105



PROJECT NAME:			
Interconexión y optimización de la línea de alta presión en las ESR's -EE.SS. (1ra fase)			
TITLE:			
Interconexion Rack de Botellones y ESR63			
DRAWING NUMBER:			
P2275538-USIME1-ESR63-LT-0001			
LINE NO:	AREC:	UNIT:	TYPE:
1 1/2"-NG-63810-CS2500G			
JOB NUMBER:	SCALE:	SHEET:	REV.
	N.T.S.	3A OF 5A	0